

M7220 & M71V2 Wireless Data  
Terminals

New Feature, Stay-Linked Client



Effective immediately, all AML M71V2 and M7220 wireless data collection terminals come with Stay-Linked terminal emulation clients preloaded.

About Stay-Linked Terminal Emulation clients:

**Better Performance:** End-users consistently report that devices running Stay-Linked thin-client software to connect to their host systems experience much "snappier" scan and screen response, even over a low-bandwidth, wide-area wireless connection (e.g. cellular, 1X, etc.).

**Better Reliability:** Stay-Linked Telnet/SSH Client sessions run on the same host system as the Telnet/SSH Server process and not on the user's device - no dropped host sessions, no gateway PC devices, and no complicated re-connect logic/proxy processes to deal with.

**Better Security:** Every keystroke and scan is encrypted as a "micro-packet" using Stay-Linked's unique Client2Host™ protocol that also keeps all Telnet/SSH communication local to the host system where it is naturally secure and not distributed over the network where it can be hacked.

**Centralized Session Management:**

Help Desk staff can monitor, share, transfer and manage Stay-Linked user sessions in real-time - even if the user's device is out-of-range, experiencing network issues or completely disabled.

**Centralized Configuration:**

Terminal emulation configuration settings are maintained and applied on the host system. No need to push configuration files to each device.

**For Stay-Linked server software and licensing handheld clients, contact:**

Phone: 877-STAYLINKED (877-782-9546)

Email: [Sales@Stay-Linked.com](mailto:Sales@Stay-Linked.com)

## Stay-Linked and the M7220

(1) Select F4, **Administration**

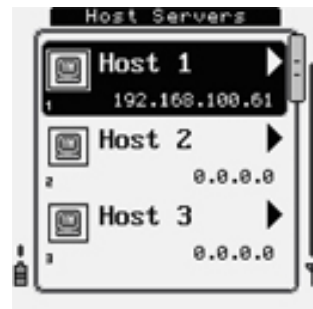
(2) Select Option 7, **VT Setup**



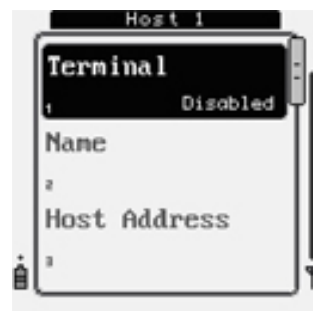
(3) Select Option 1, **Hosts**



(4) Select a host to configure with the Stay-Linked client (1-8), and press ENTER



(5) Press ENTER on **Terminal**



(6) Scroll down and select Option 9, **StayLinked**



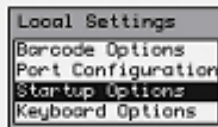
(7) Press Esc to save settings. When connecting to that defined host, the Stay-Linked client will run automatically

## Stay-Linked and the M71V2

(1) From the Main Menu, select **Local Settings**

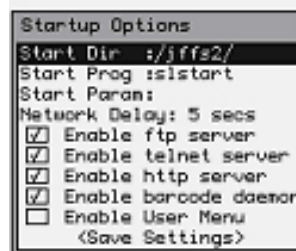


(2) Select **Startup Options**



(3) For **Start Dir**, enter: **/jffs2/**

(4) For **Start Prog**, enter: **slstart**



(5) Scroll down and select

(6) Press Esc to back out to Main Menu

All rights reserved. All names, products, and services are the trademarks or registered trademarks of their respective organizations.

For more information, contact your AML sales representative:

**Dollie Charron**  
AML Sales Manager

800-648-4452 Ext 113  
[dcharron@amltd.com](mailto:dcharron@amltd.com)



2190 Regal Parkway - Euless, Texas 76040