



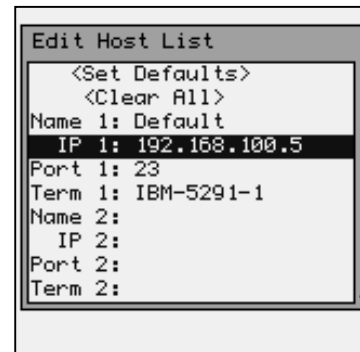
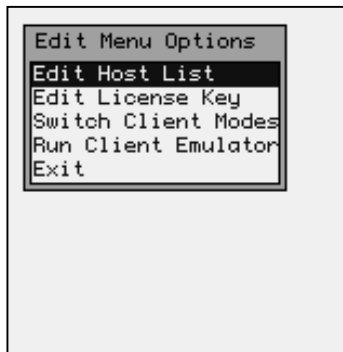
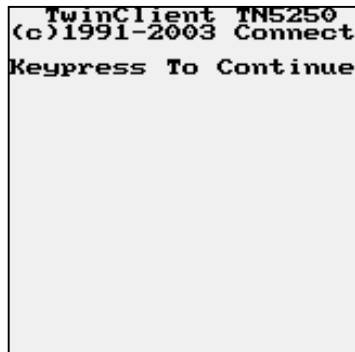
Using the M7100 hand held terminal with the Connect Twin Client Software

This M7100 unit has been upgraded with the Connect Twin Client software. The Twin Client software on this terminal has been configured to run either 5250 or 3270 or VT220 terminal emulation.

In order to connect to a host system, you must first ensure that you are connecting to your own RF network. To determine if you are connected to the RF network, press the M7100 **[Menu]** key then use the arrows to select **“Diagnostic Menu > RF Signal Strength”**. If you are connected to a RF network, the **“RF Quality”** will not be zero and the **“WLAN:”** status will say **“Connected – AP”**. If you are having trouble connecting to your RF network, please see the [M7100 User's Manual](#) under “Network Setup” for more details.

Once you are connected to your RF network, you must set the host IP address. This IP address is set using the Connect Menu and **not** the M7100 Menu system. In order to access the Connect Menu, you must press the **[Shift]** key then press the **[C]** key when you first see the Connect “TwinClient” splash screen. You can then select the **“Edit Host List”** item and press **[Enter]** to edit the host information. Press the **[Esc]** key when finished. Select the **“Run Client Emulator”** to start the TE (terminal emulation) session.

*Note: If you have set the “Keyboard Options” to “CAPS Lock on Boot” (box is checked), you must hit the **[Func]** then **[Shift]** then **[Shift]** again then the **[C]** key to access the Connect menu system.*



Note: The quickest way to get the Connect Menu items setup properly, is by selecting <Clear All> then selecting <Set Defaults> and then setting the proper Host IP address.

Once these settings are correct, you should be able to log-on to the host system. If you have trouble logging onto the host system, please see the [Connect Twin Client Reference](#) manual for the M7100 or the full Connect Twin Client Reference manual on the enclosed CD that came with the M7100.

The Connect Twin Client software comes with a PC based software product called the Twin Client Manager. This is the software that controls all the features of the Twin Client terminal emulations. This PC based software should be installed on a PC that is connected to the same RF network as the M7100 hand held terminals. Once the features necessary for your particular computer network are set, they can be saved to disk, and downloaded to the M7100 terminals, by using the built-in FTP server in the Twin Client Manager software.

In order to send the Connect setup files to the M7100 terminal, you must insure that you are **not** running the Connect TE software on the target terminal. In order to terminate a TE session, press the **[Func]** key then press the **[0]** key on the M7100. You can also stop a TE session by using the Connect Menu (see above) and selecting **“Exit”**.

When using the Connect FTP server, you must know the terminal's IP address. The “User ID:” is always **aml** and the “Password:” is always **turk182**.